

Automatic Undercarriage Wash System **AUWS**

The AUWS Automatic Undercarriage Wash System solves the difficult task of removing heavy mud and dirt soil loads from the undercarriage and sides of vehicles and machinery. This drive over system is fully automatic and self-cleaning. Sensors detect the approaching vehicle and control the system start and run time. The AUWS can be equipped with optional side and overhead spray arches and a wash pump that produces over 500 GPM to provide complete exterior washing.

The AUWS must be installed in a vault with the approach and exit driveways level with the top of the drive over wash platform. Hydropad wash rack arrays or concrete are used to create the driveway. When Hydropad above ground wash racks are used they are configured with walls that help contain wash spray. The Hydropads are installed on a slightly sloped grade using wood rail ties as footings that insure that wash water and debris is collected in the integral gutter and then returned to the AUWS. The solids settle in the AUWS tank and are removed automatically with a drag conveyor. Wash water is filtered and reused.

Construction is required to build the vault, set the ties, run and connect the water and power to the AUWS. With the vault and wood ties in place a typical installation and training take three to six man days.



1. Specifications are effective 2017. 2. Specifications are subject to change without notice

Automatic Undercarriage Wash System **AUWS**

Standard Features:

- 208/230 Volt 3-P 60 Hz
- 320 GPM flow rate for undercarriage and wheel wash
- 6' high walls
- Photo eye activation system
- AUWS connects to Hydropads on drive in and drive out sides

Optional Features:

- 460 Volt, 3-P, 60 Hz
- 50 Hz electrical available
- 530 GPM flow, undercarriage, wheel, vehicle sides and top wash
- Tank heater
- Tunnel spray arch (side and top wash)
- Fresh water rinse arch
- Hydropads are quoted separately



[Get a Quote](#)

1. Specifications are effective 2017. 2. Specifications are subject to change without notice

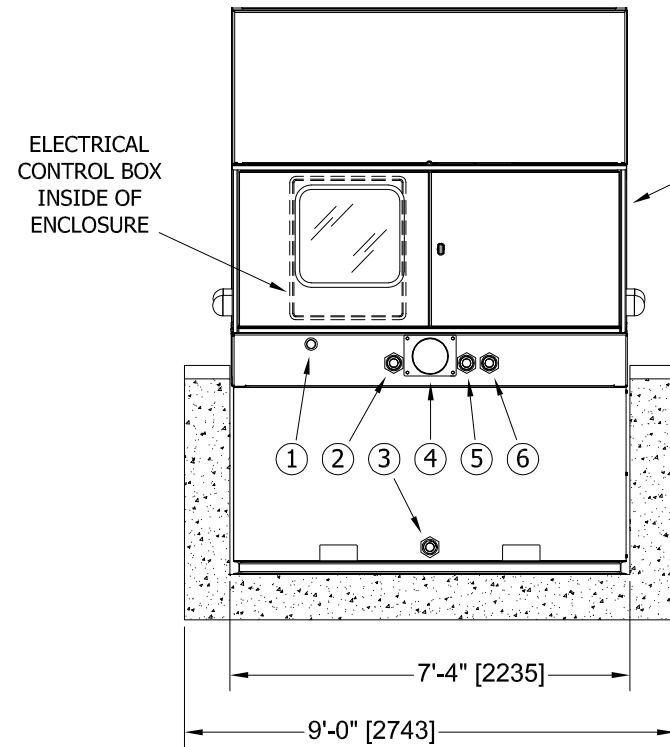
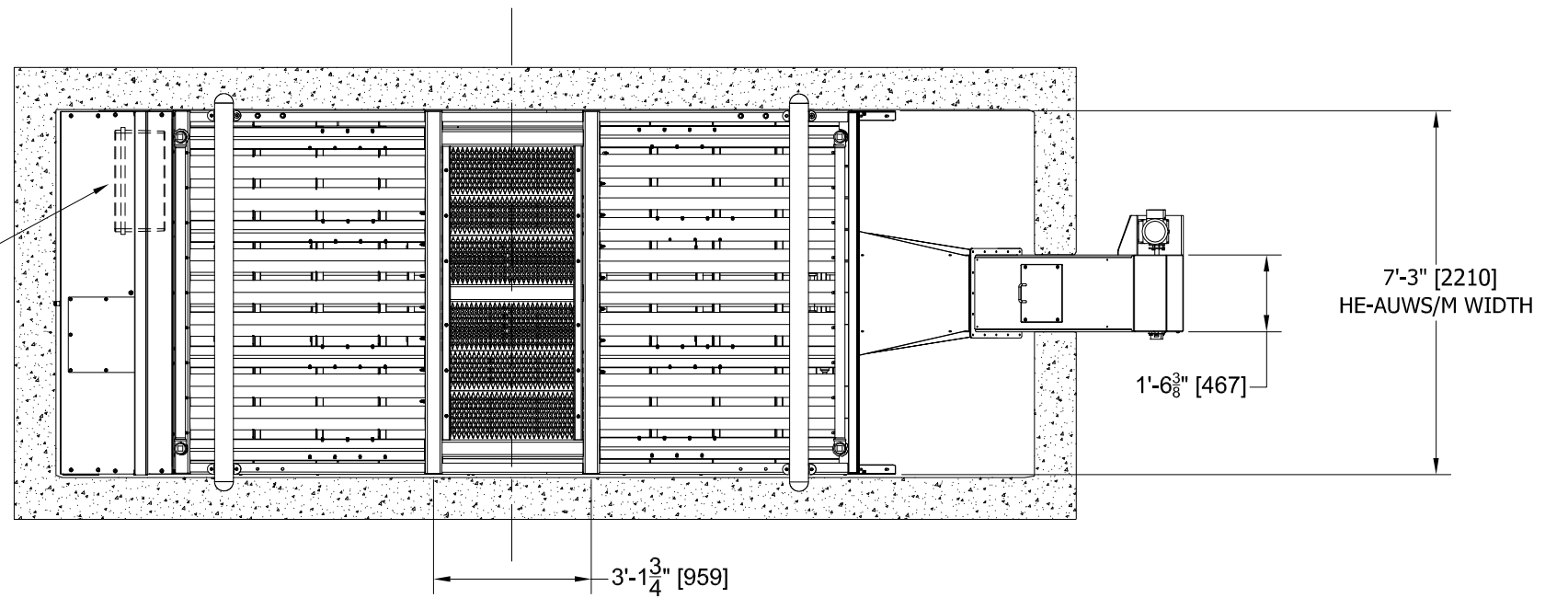
	ADJUSTABLE TIRE GUIDE SPAN
POSITION 1 - "A"	9'-3" [2820]
POSITION 2 - "B"	11'-1" [3380]

ELECTRICAL OPTIONS	VOLTAGE (3PH)	MOTOR	PUMP OUTPUT (GPM)
60 Hz	208-230V, 460V	15HP	320
		20HP	530
50 Hz	230V, 400V	15HP (11 kW)	320
		25HP (19 kW)	450

NOTE: HE-AUWS/M UNDERCARRIAGE WASH SYSTEM COMES STANDARD WITH PUMP & MOTOR, 3HP AIR COMPRESSOR, 1/2HP CONVEYOR GEAR MOTOR, & PHOTO EYE SENSORS.

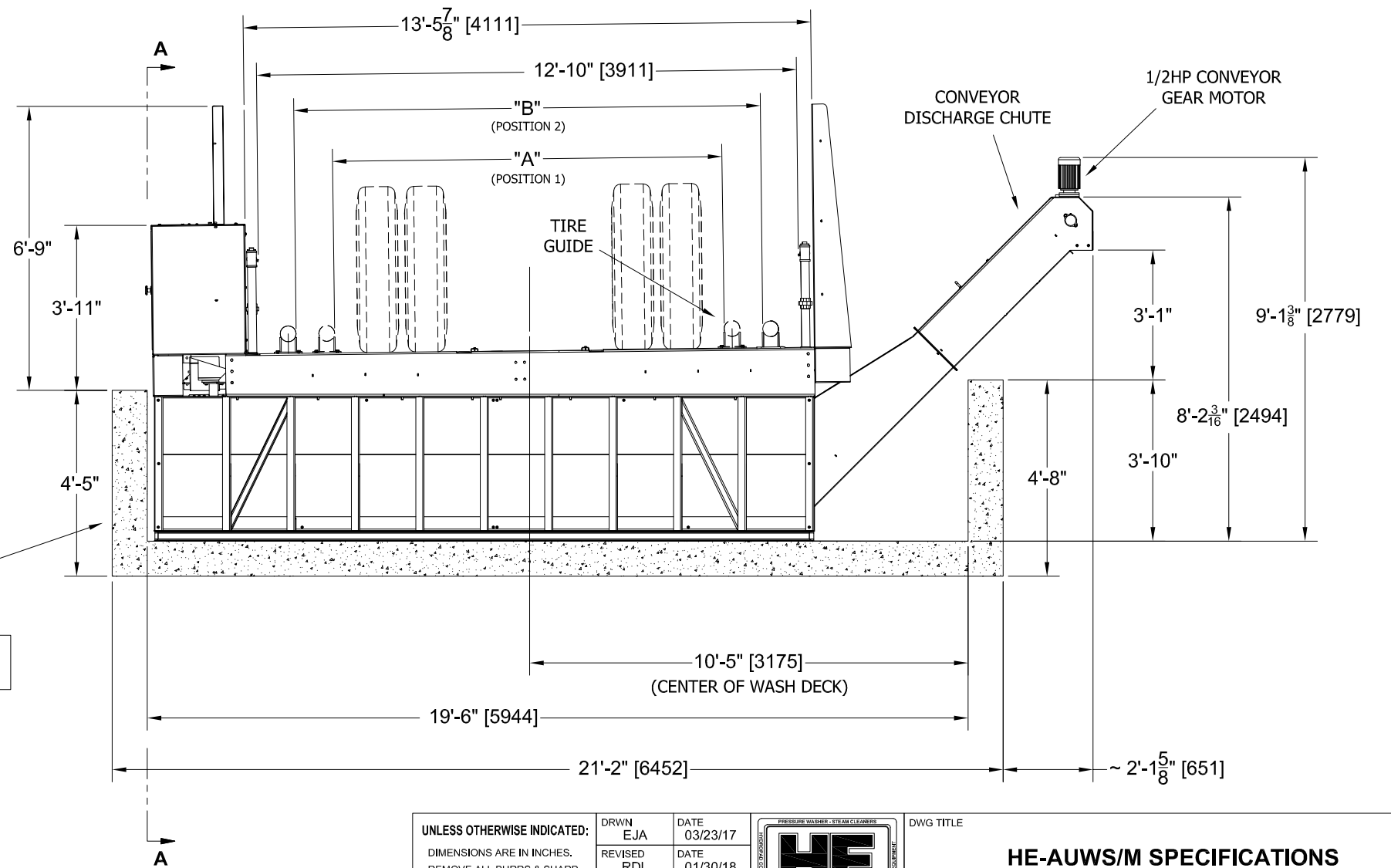
OPTIONAL ITEMS INCLUDE: 1/2HP DISCHARGE SUMP PUMP AND 3kW TANK HEATER.

ELECTRICAL CONTROL BOX INSIDE OF ENCLOSURE




LOCKABLE ENCLOSURE: SECURES PUMP/MOTOR, AIR COMPRESSOR, CONTROL BOX & OPTIONAL TANK HEATER.

CONCRETE VAULT BY OTHERS
DIMENSIONAL SPECIFICATIONS PROVIDED BY HYDRO ENG. INC.



- ① ELECTRICAL CONDUIT PORT (2" DIA.)
- ② OUTFLOW TO FILTRATION (1-1/2" FPT)
- ③ TANK DRAIN PLUG PORT (1-1/2" FPT)
- ④ 20 FT. PAD GUTTER CONNECTION (8" DIA. PORT)
- ⑤ WASTE WATER IN (1-1/2" FPT)
- ⑥ MAKE-UP WATER (1-1/2" FPT)

UNLESS OTHERWISE INDICATED: DIMENSIONS ARE IN INCHES. REMOVE ALL BURRS & SHARP EDGES. TOLERANCES AS FOLLOWS: ± 1/8" ON LINEAR DIMENSIONS ± 1° ON ANGLES	DRWN EJA	DATE 03/23/17		DWG TITLE HE-AUWS/M SPECIFICATIONS	
	REVISED RDL	DATE 01/30/18		DESIGNER(S) EJA, JPM, RDL	HYDRO ENGINEERING INC. 865 W. 2600 S., SALT LAKE CITY, UT 84119
	APPR ---	DATE ---		MATERIAL ---	PROJECT / DWG TYPE DIMENSIONAL SPECIFICATIONS
	DWG FILE ...CAD\SPCS\HE-AUWS-M\HE-AUWS-M_SPECS.DWG				
** THIS PRINT SUPERSEDES ANY PRINT DATED PRIOR TO REVISION DATE **			HYDRO ENGINEERING P/N: HE-AUWS/M	DWG P/N: PDHE-AUWS-M_SPECS	