

NOTES:

1. SPACE REQUIREMENTS

PROVIDE MIN. 36" IN FRONT OF CONTROL BOX, MIN. 6" ON REAR SIDE. ALLOW ENOUGH SPACE AROUND THE UNIT FOR ACCESS AND SERVICE. PRE CHARGED WELL TANK SHALL BE PLACED ADJACENT TO PUMP UNIT.

2. POWER REQUIREMENTS

POWER TO BE SUPPLIED ON SEPARATE PROTECTED CIRCUIT BY OTHERS PER REQUIREMENTS LISTED ON TABLE OR ON SUPPLEMENTAL SPECIFICATION SHEET.

3. PLUMBING CONNECTIONS

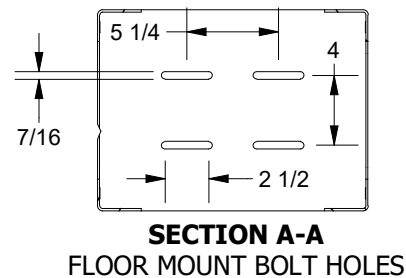
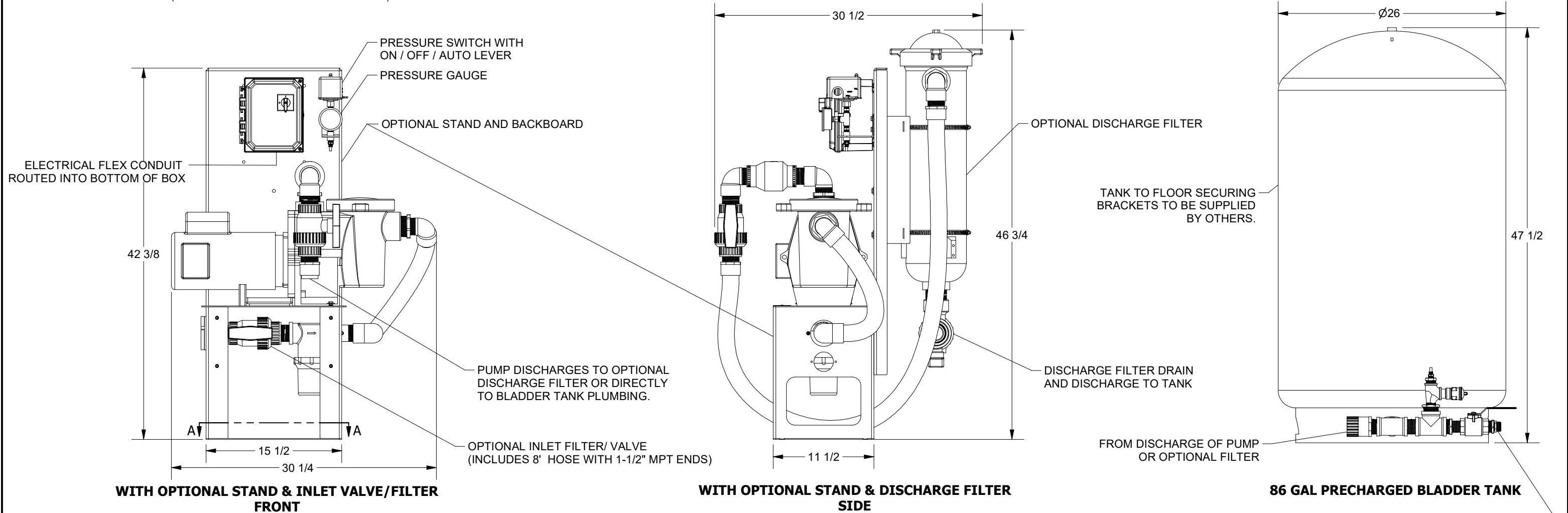
WATER REQUIREMENTS

INLET WATER SUPPLY TO BE PROVIDED FROM RST TANK. SHUT-OFF (ISOLATION) VALVE (AVAILABLE AS PART OF INLET FILTER OPTIONS) MOUNTED AT THE INLET TO THE PUMP.

CONNECTIONS

1-1/2" MPT INLET HOSE IS INCLUDED WITH INLET FILTER OPTIONS.
 PUMP INLET IS 1-1/2" FPT IF NO INLET FILTER OPTION IS SELECTED.
 1" FPT DISCHARGE PORT (OPTIONAL PLUMBING TO 3/4" MGH AVAILABLE)

SPECIFICATIONS TABLE		
SPEC.	1PH, 60Hz	1PH, 50Hz
VOLTAGE	208/230	208/230
AMPERAGE	7.3/6.6	7.2/6.8
PUMP MOTOR HP	1.5	1.5
WEIGHT (W/O STAND) (LBS)	225	225
WEIGHT (W/STAND) (LBS)	270	270
WEIGHT (W/STAND & DISCHG. FILTER) (LBS)	294	294



UNLESS OTHERWISE INDICATED: DIMENSIONS ARE IN INCHES. REMOVE ALL BURRS & SHARP EDGES. TOLERANCES AS FOLLOWS: ± .1" ON ANGLES	DRWN: RRG DATE: 11/03/22		DWG TITLE: 1UU170 REPRESSURIZATION SYSTEM, 30PSI @ 50GPM	
	REVISED: RRG DATE: 11/18/22		PROJECT / DWG TYPE: DIMENSIONAL SPECIFICATIONS	
	APPR: RRG DATE:	DESIGNER(S): RRG	HYDRO ENGINEERING INC. 865 W. 2600 S., SALT LAKE CITY, UT 84119	DWG FILE: W:\CAD\SPCS\REPRESSURIZATION\1UU170\
	VAULT FILE: SD1UU170.idw		DWG P/N: SD1UU170	