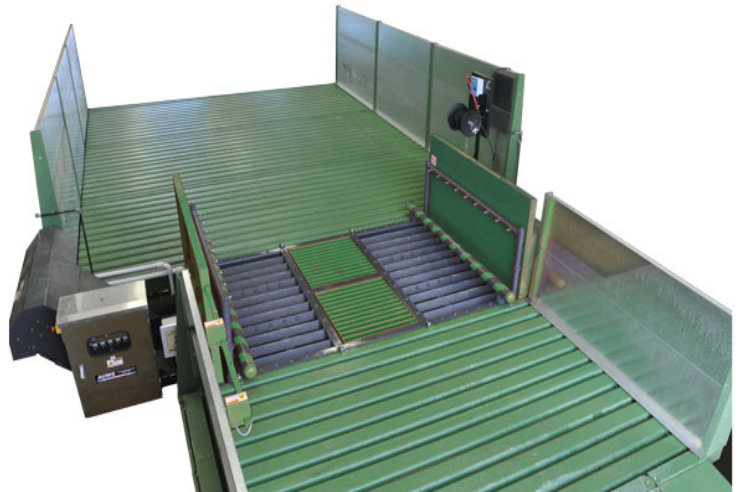


AUWS

The AUWS is an Automatic Undercarriage and Wheel Washing System that solves the difficult task of cleaning heavy mud and dirt from the undercarriage and wheels of vehicles and machinery.

This drive over system is fully automatic and selfcleaning. Both the approach and exit ends of the AUWS are connected to a Hydropad above ground wash rack system. It can be used as a Stand Alone Undercarriage Wash, or the AUWS may be incorporated

into a fully functional wash environment. Either way, it's set in place, connected, and operating within days. Water and solids from the Hydropad's patented side gutter flow into the AUWS where its drag conveyor removes and stacks solids in a 'near dry condition' for disposal.



Standard Features

6' Walls
Automatic Start Photo-eye
Discharge Chute

Optional Features

Tunnel Arch Spray
Water Tank Heater
Sump Pump
Remote Emergency Stop

Specifications

Dimensions, Inches (cm) 228.2" (579.75) L X 95" (241.3) W X 92.5" (235) H
Weight, Lbs (kg) 7200 (3266)

	Standard	
Volts (60Hz)	230V-3P	460V-3P
Amps (60Hz)	64	32

Pricing

For complete pricing details,
Submit a quote online below.

[Get a Quote](#)

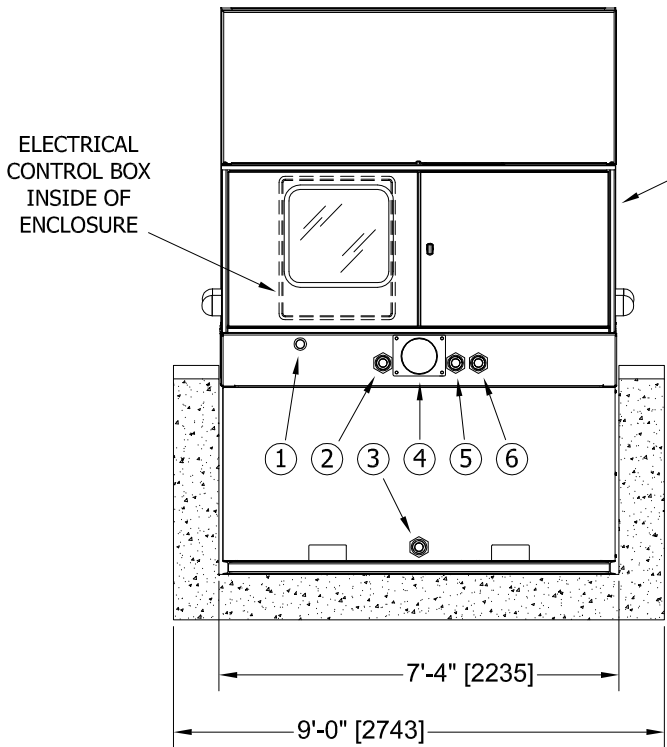
HYDROPAD RATING	"C"	"D"	"E"	"F"	"G"	"H"
2 TONS/AXLE	3'-11"	4'-5"	6'-9"	3'-1"	3'-10"	4'-8"
12 TONS/AXLE	[1196]	[1346]	[2057]	[939]	[1168]	[1422]
30 TONS/AXLE	4'-1"	4'-3"	6'-11"	3'-3"	3'-8"	4'-6"
	[1243]	[1295]	[2108]	[990]	[1118]	[1372]

	ADJUSTABLE TIRE GUIDE SPAN
POSITION 1 - "A"	9'-3" [2820]
POSITION 2 - "B"	11'-1" [3380]

ELECTRICAL OPTIONS	VOLTAGE (3PH)	MOTOR	PUMP OUTPUT (GPM)
60 Hz	208-230V, 460V	15HP	320
		20HP	530
50 Hz	230V, 400V	15HP (11 kW)	320
		25HP (19 kW)	450

NOTE: HE-AUWS/M UNDERCARRIAGE WASH SYSTEM COMES STANDARD WITH PUMP & MOTOR, 3HP AIR COMPRESSOR, 1/2HP CONVEYOR GEAR MOTOR, & PHOTO EYE SENSORS.

OPTIONAL ITEMS TO INCLUDE: 1/2HP DISCHARGE SUMP PUMP AND 3kW TANK HEATER.



VIEW A-A

- 1

ELECTRICAL PIPING PORT (2" DIA.)
- 2

OUTFLOW TO FILTRATION (1-1/2" FPT)
- 3

TANK DRAIN PLUG PORT (1-1/2" FPT)
- 4

20 FT. PAD GUTTER HOSE (8" DIA. PORT)
- 5

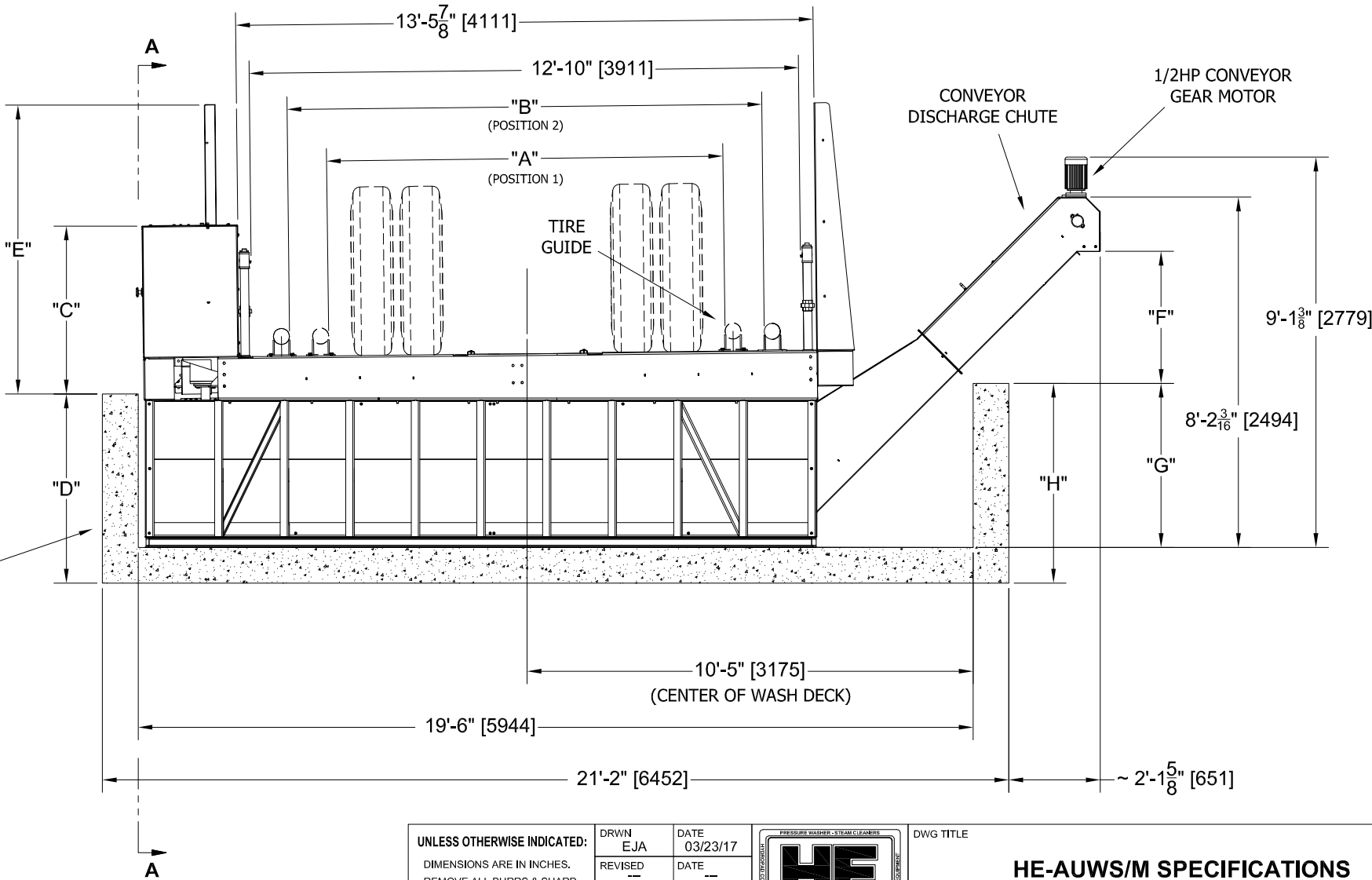
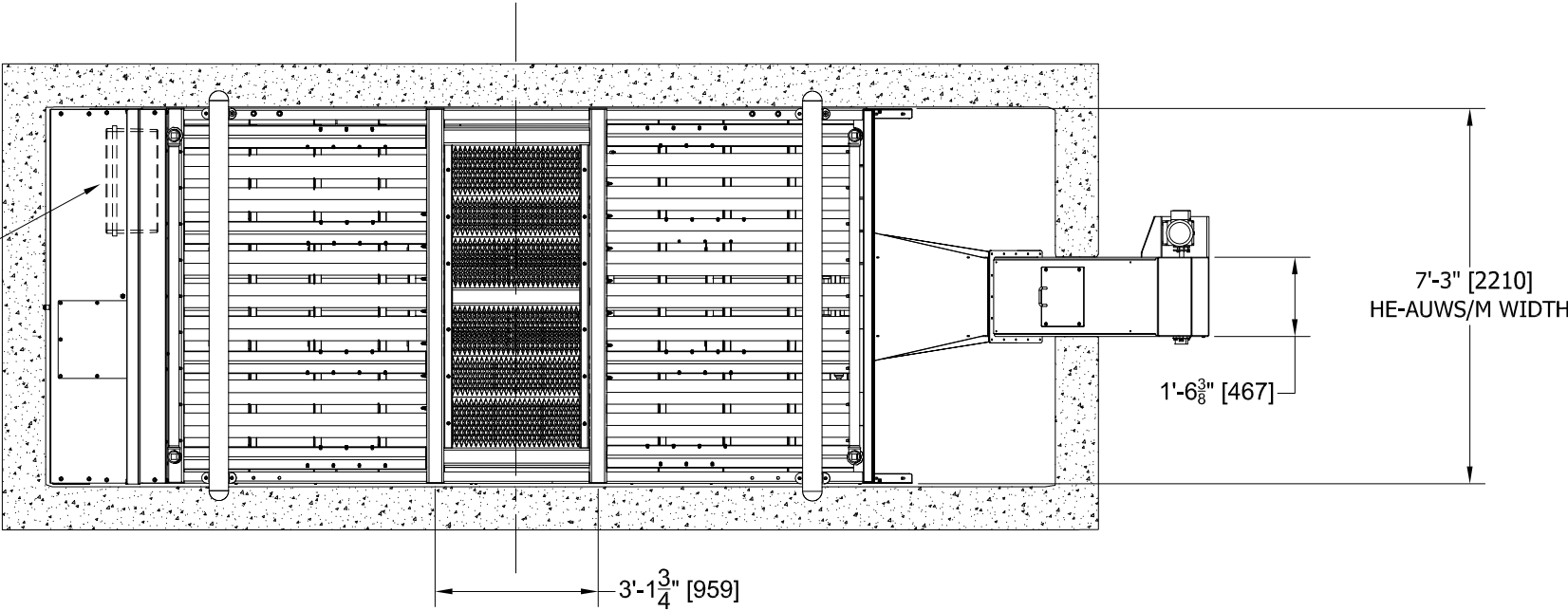
WASTE WATER IN (1-1/2" FPT)
- 6

MAKE-UP WATER (1-1/2" FPT)

ELECTRICAL
CONTROL BOX
INSIDE OF
ENCLOSURE

LOCKABLE ENCLOSURE:
SECURES PUMP/MOTOR,
AIR COMPRESSOR, CONTROL
BOX & OPTIONAL TANK HEATER.

CONCRETE VAULT BY OTHERS
DIMENSIONAL SPECIFICATIONS
PROVIDED BY HYDRO ENG. INC.



- 1

ELECTRICAL PIPING PORT (2" DIA.)
- 2

OUTFLOW TO FILTRATION (1-1/2" FPT)
- 3

TANK DRAIN PLUG PORT (1-1/2" FPT)
- 4

20 FT. PAD GUTTER HOSE (8" DIA. PORT)
- 5

WASTE WATER IN (1-1/2" FPT)
- 6

MAKE-UP WATER (1-1/2" FPT)

UNLESS OTHERWISE INDICATED:

DIMENSIONS ARE IN INCHES.
REMOVE ALL BURRS & SHARP
EDGES.

TOLERANCES AS FOLLOWS:

± 1/8" ON LINEAR DIMENSIONS
± 1° ON ANGLES

DRWN	EJA	DATE	03/23/17
REVISED	---	DATE	---
APPR	---	DATE	---

DESIGNER(S)
EJA,JPM,RDL
MATERIAL



DWG TITLE

HE-AUWS/M SPECIFICATIONS

HYDRO ENGINEERING INC.
865 W. 2600 S., SALT LAKE CITY, UT 84119

PROJECT / DWG TYPE
DIMENSIONAL SPECIFICATIONS

DWG FILE
...CAD\SPCS\HE-AUWS-M\HE-AUWS-M_SPECS.DWG

** THIS PRINT SUPERSEDES ANY PRINT DATED PRIOR TO REVISION DATE **

HYDRO ENGINEERING P/N: HE-AUWS/M

DWG P/N: PDHE-AUWS-M_SPECS