

Hydropad, low profile, gutter is separate

Model 4GQ760, 7.5'L X 8'W

Hydropad above ground steel wash rack systems solve SWPPP requirements for vehicle and equipment wash/collection. Design a wash rack for; drive through or drive-in-back-out, overspray containment walls, awnings, remote control stations, various wash water collection and recycling options, vehicle/wheel and undercarriage wash and raised catwalks.

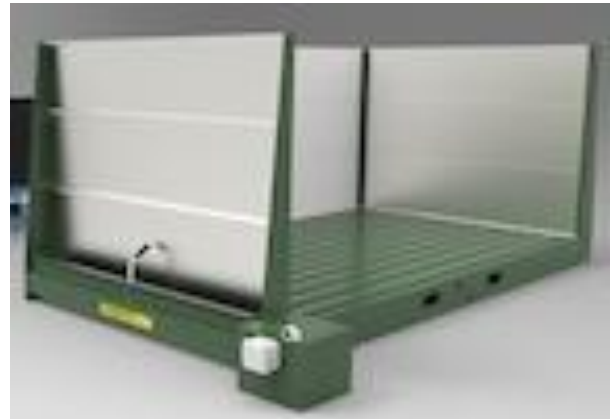
- Modular design to provide any size wash rack required
- Capture wash water and solid wastes
- Promote EPA and SWPPP compliance
- Easy to deploy or re-deploy

Standard

- 12 ton per axle

Options

- Pad connection kit
- Side wall; 4' 6' and 8'
- Gutter side wall; 4' 6' and 8'
- Rail wall, 4', 6' and 8'
- Access ramps;
 - 63.5"L X 24" W
 - 86"L X 48"W



Hydropad wash rack; 7.5' wide X 8' long with 6' walls on 3 sides makes for the perfect indoor wash rack. Example only.....design exactly what you need.

Specifications

Weight Lbs (kg) - 1082 (491)

Dimensions Ft (m) 7.5' (2.29)L X 8' (2.44)W X 8" (.2)H

1. Specifications are effective 2024 2. Specifications are subject to change without notice