

**HYDRO ENGINEERING
INC**

help@hydroblaster.com
www.hydroblaster.com

HYDROPAD SYSTEMS

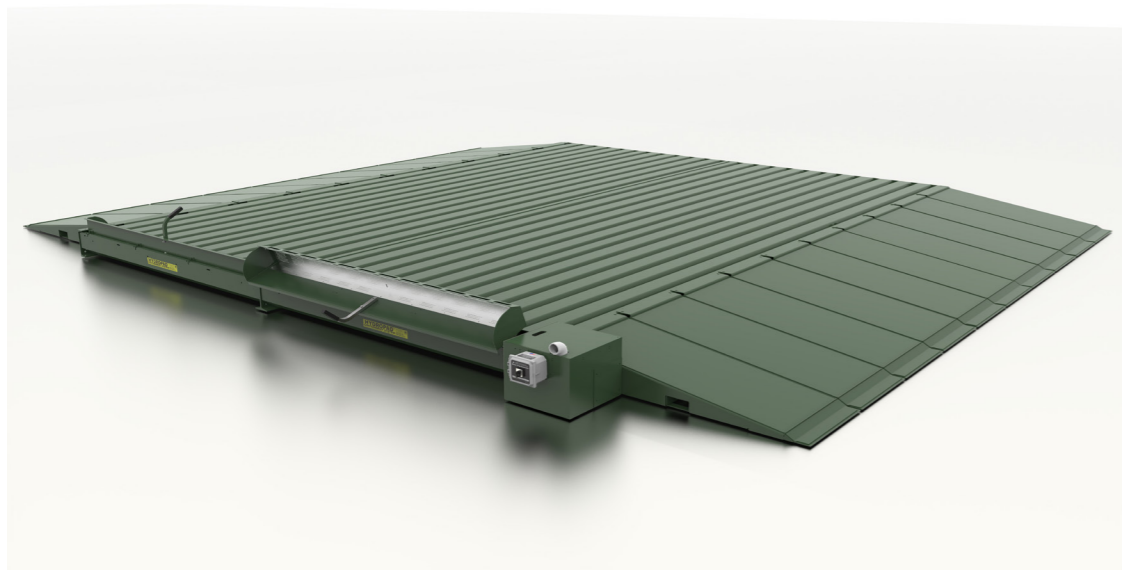
ABOVE GROUND, MODULAR, STEEL WASH RACKS



HYDROPAD SYSTEM

Above Ground Modular Steel Wash Racks

- Hydropad equipment solutions, instead of construction project complexity
- Fast and simplified setup
- Installation flexibility; temporary or permanent and always relocatable as desired
- Meets SWPPP requirements and benefits all environmental responsibility
- Extreme weight load capacity superior for any application requirements
- Quality manufacturing by in compliment with ISO 9001:2015 Certification



Application Design Assistance

Hydro Engineering, Inc. manufactures Hydropad systems and provides experienced application design assistance and planning support. Patented Hydropad technology is a proven innovative solution for incorporation anywhere, to compliment a wash/rinse decontamination operation, or benefit any application requiring fluid capture, containment, and/or transfer to wastewater filtration or recycling systems. Hydropad systems and associated components are all steel, modular, and employ options to allow simple heavy duty above ground installation, assembly, and benefit complete environmental compliance.

Hydropad Systems, complimented by Hydro Engineering, Inc. assistance, can create application design configuration to create optimum results. All applications can have unique challenges. Hydro Engineering, Inc. knowledge, 42 year experience and extensive wisdom will benefit project success.

Hydropad Systems employ accessories, options, and proven configuration flexibility to achieve best success. Hydropad systems and components are essential factors for vehicle and equipment support, accidental fluid drain capture, and collection of wash/rinse decontamination wastewater. Hydro Engineering, Inc. manufactures and supplies effective wastewater processing systems to function in coordination with Hydropad solution for removal of wash/rinse wastewater contaminants. For many installations, processing systems operate closed-loop to prevent any location discharge and reuse water after effective contaminant removal filtration processing.

Industrial agencies and construction operation requirements have configurations that vary widely. Combining Hydropad system with Hydro Engineering, Inc. Hydroblaster wash/rinse technology and Hydrokleen wastewater processing systems satisfy

ACCREDITATION FACTS ABOUT HYDRO ENGINEERING, INC.

FORMATION **1980**
IBUSINESS **REGISTERED SMALL**
CERTIFICATION **ISO 9001:2015**
PROJECTS **THOUSANDS**
ORGANIZATION **6 DEPARTMENTS**



WE HELP DESIGN WITH EFFECTIVE INTEGRATED STRATEGY, EMPLOY ALL EFFICIENT SOLUTIONS, DELIVER QUALITY PRODUCTS AND BEST FACTORY SUPPORT

HYDRO ENGINEERING, INC. EXAMPLE CERTIFICATIONS

ISO 9001:2015
Quality Management System

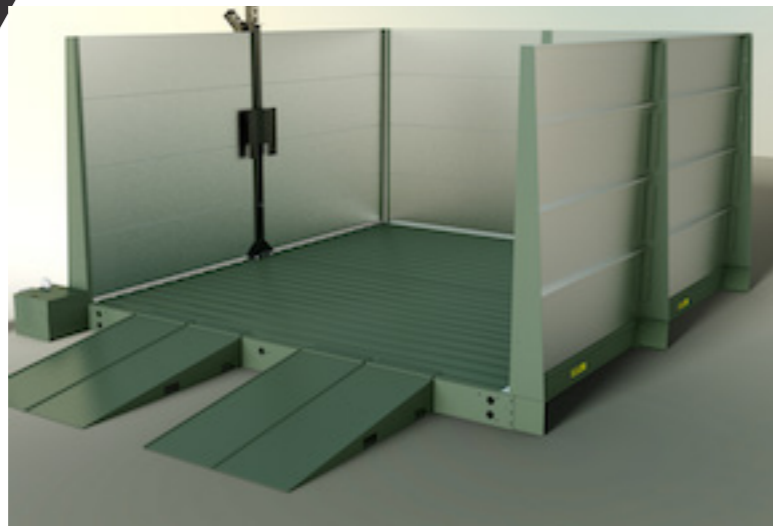
UL 1776
Pressure Washer Safety Standards

UL 979
Water Treatment Appliances

UL 61010-1
Electrical Equipment Safety

HYDROPAD SOLUTIONS

“Hydropad allows recycle operation for water conservation and prevents wastewater from leaving property to support environmental compliance”

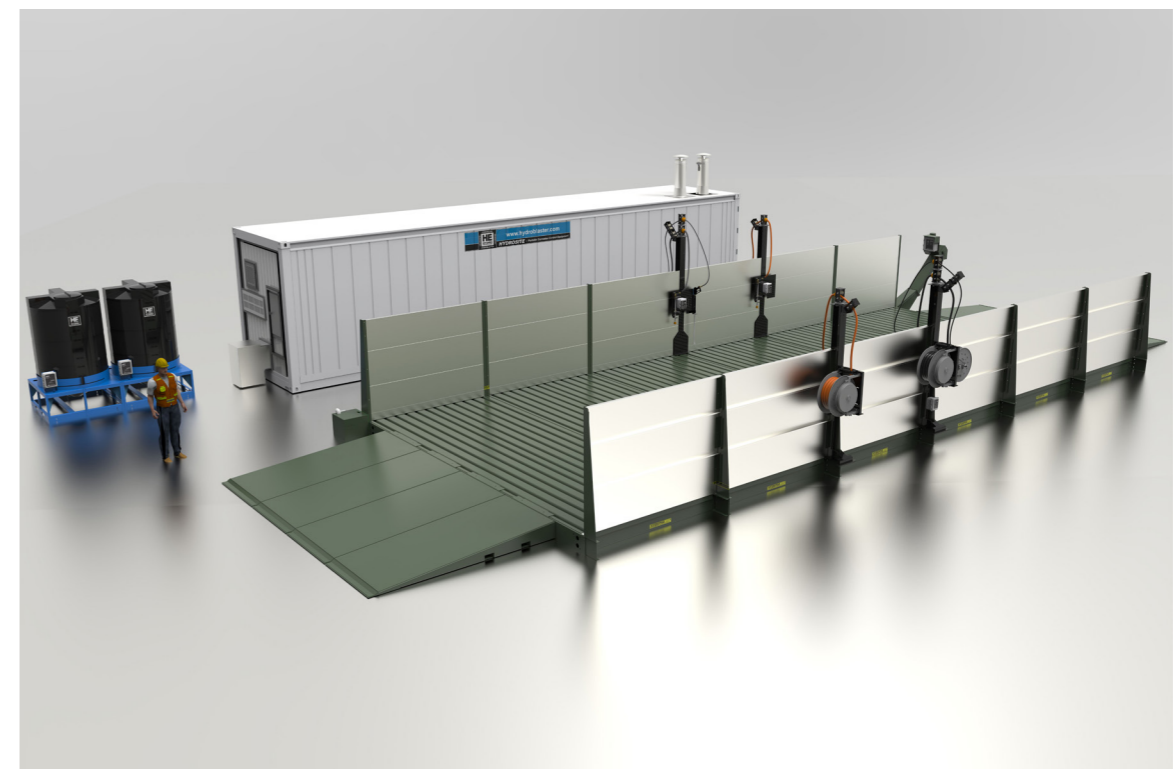
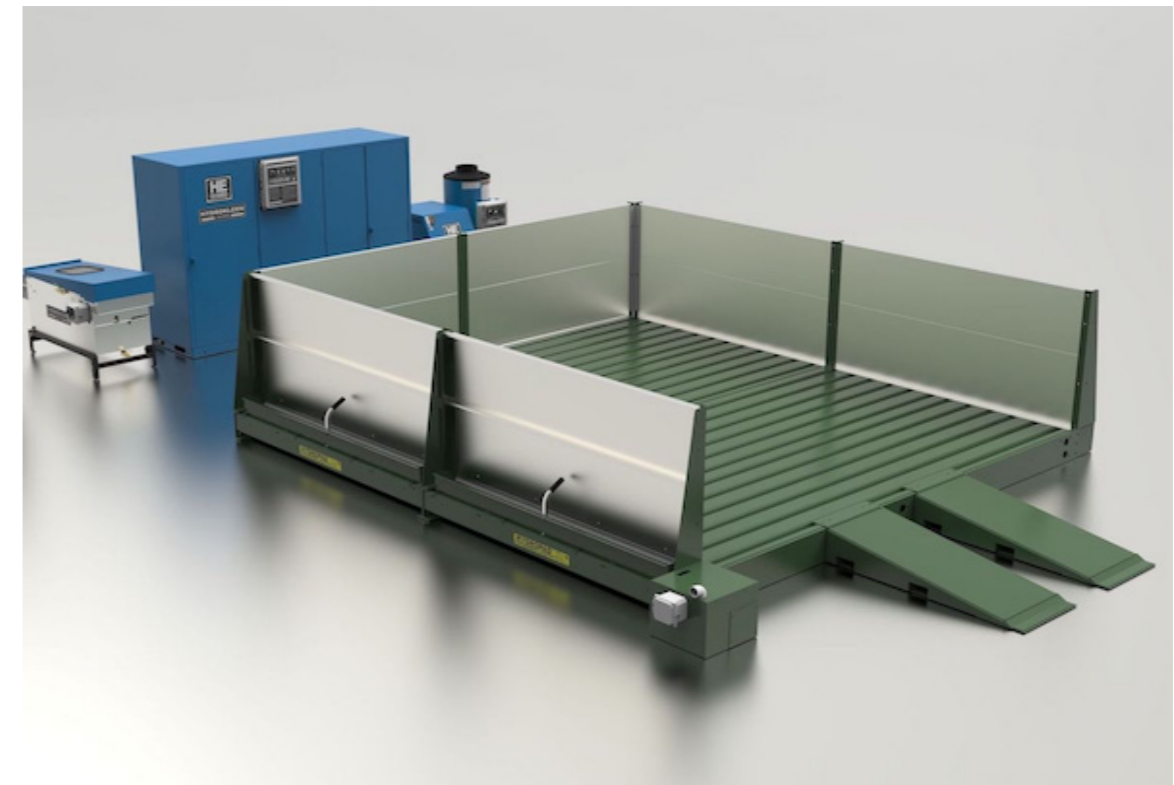


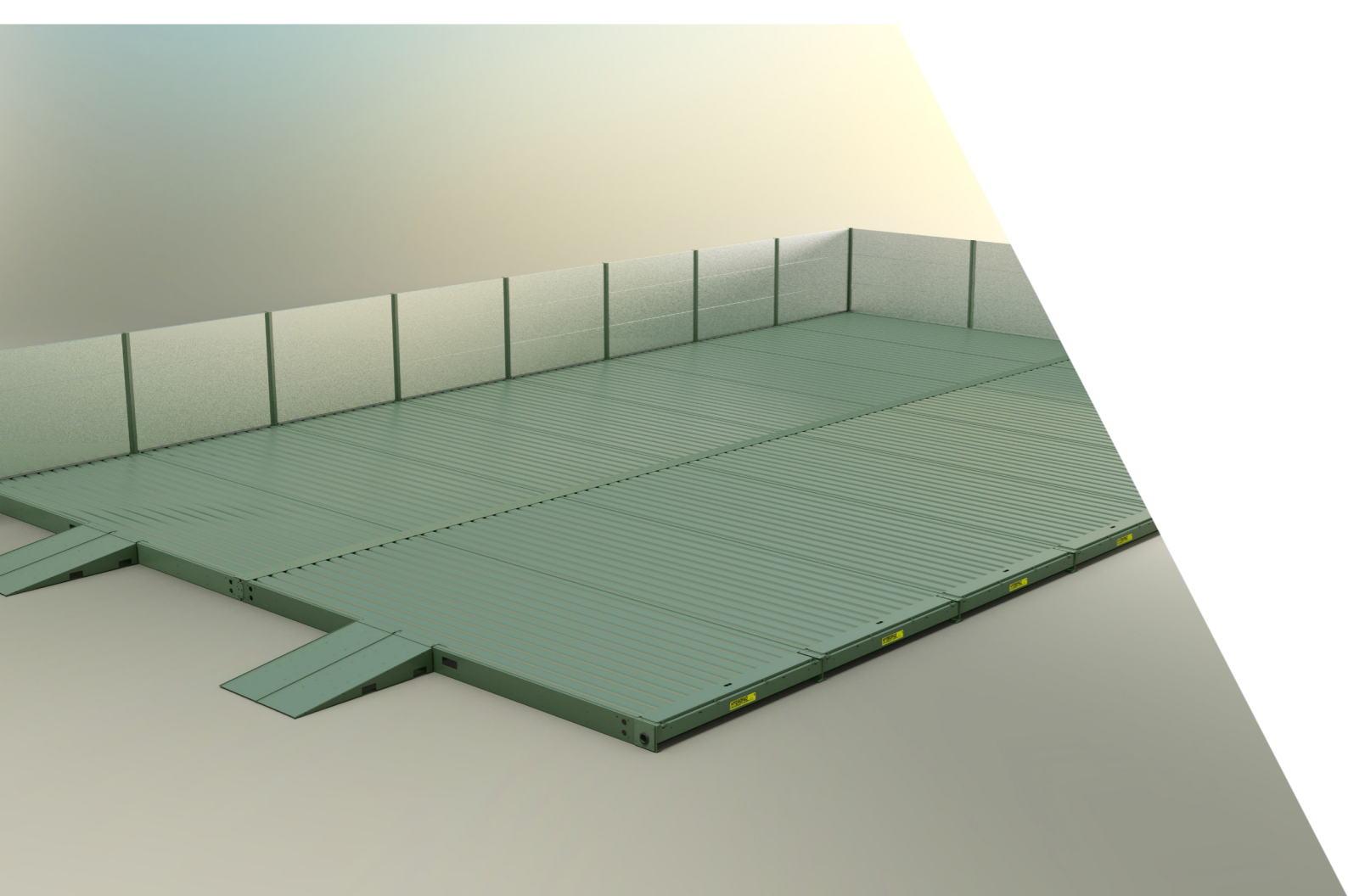
Patented Hydropad Systems – Solves Solids/Liquid Capture, Containment, Safety and More . . .

- Modular Equipment Solution, Eliminate Construction Requirements
- Temporary or Permanent, Always Relocatable
- Simple and Rapid Above Ground Assembly and Installation
- All Steel, Extreme Load Capacity and Durable Sustainability
- ISO Approved Multi-Step Metal Preparation and Coating
- Platform Channeled, Expedites Liquid and Solids Gravity Evacuation
- Platform Surface Is Impervious and Non-Slip
- Superior Durability, Stronger Than Concrete and Better Use Sustainability
- Endless Plan Configuration, No Dimensional Limitations
- Integral Side Gutter, Non-Interference of Fluid Collection or Equipment Movement
- Patented Hydropad System is Best Portable Collection/Containment Technology Available

Hydropad System Can Be Dynamic Component of Integrated System . . . Hydro Engineering, Inc. Also Manufactures Vital Solutions for Total Integrated Completion

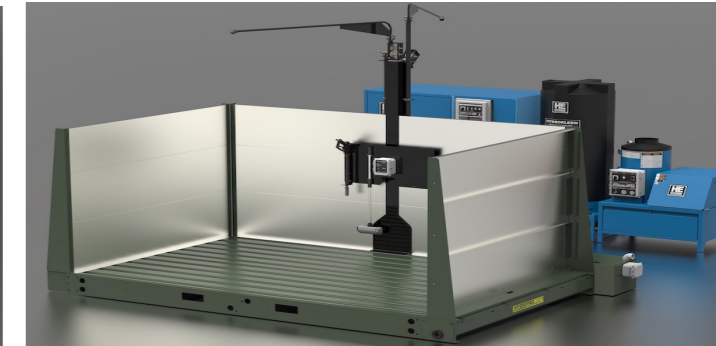
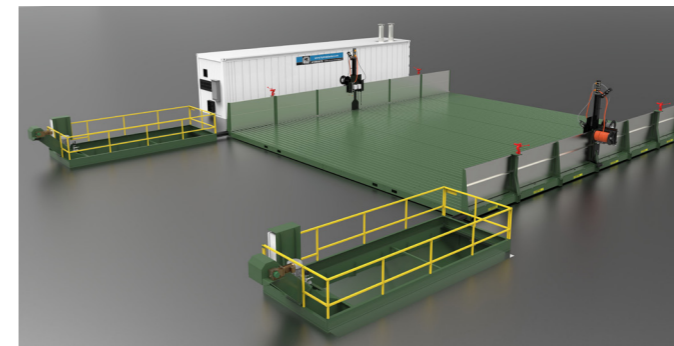
- Hydrofoamer Cleaning Compound Solution Mix, Distribution and Application Systems (UL-1776)
- Hydroblaster Automatic Undercarriage and Side Wash Systems
- Hydroblaster Pressure Wash/Rinse Systems, Certified UL (UL-1776)
- Hydroblaster High Volume Water Cannon Systems, Certified UL (UL-1776)
- Hydrokleen Wastewater Filtration Systems Certified (UL 979)
- Hydrosite System, All Wash/Rinse/Filtration Packaged as Complete System (UL-1776)





ENDLESS APPLICATIONS

Hydropad system can satisfy a wide variation of design configurations and dimensional requirements. System can employ any selection of optional features to optimize best solution for any application and site challenges. Factory project management shares extensive wisdom and provides proven concepts to benefit your project with efficient products and continued satisfaction.



GENERAL SPECIFICATIONS

Available Sizes

Low Profile Hydropad Platform Modules: 7.5' (2.29 M) long, 8" (2.44 M) high
Widths: 8' (2.44 M) up to 20' (6.1 M)

Weight Ratings

Wheeled Consideration 2-ton/axle (907 Kg) up to 75-ton/axle (68 t)
Approximately 14,400-lbs/ft (21,430 Kg/m) on 12 & 30-ton/axle
Approximately 28,800-lbs/ft (42,860 Kg/m) on 75-ton/axle
Optional from 1 wall to full enclosure
Optional heights, 4', 6', 8', 10', 12' & 14', with wind ratings up to 100+ MPH.

Containment Walls

Optional from 1 side to full enclosure
Optional heights 4' (1.22 M) up to 14' (4.27 M), wind rating 100+ MPH (161 KM/H)

Drive On/Off Ramps

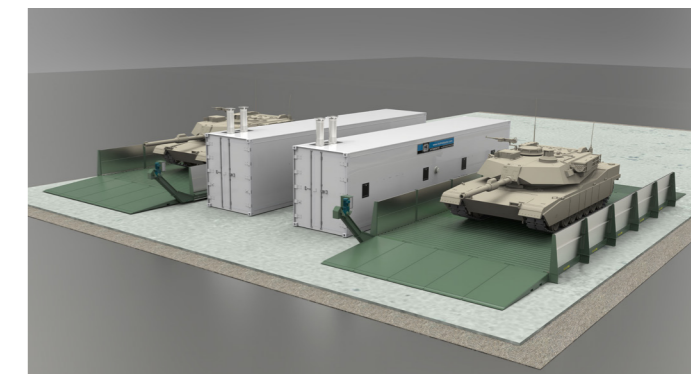
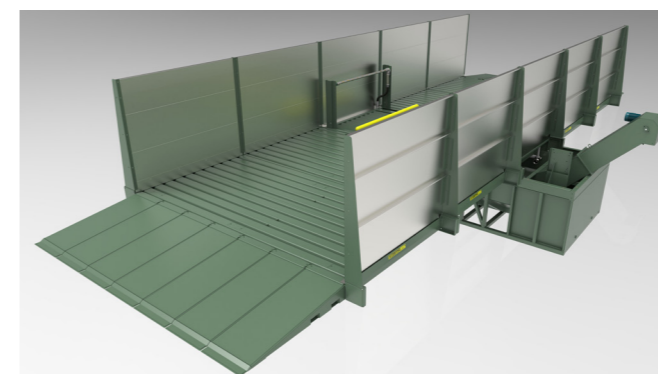
Available in 24" (610 mm) and 48" (1,219 mm) widths

Solids Removal

Optional side gutter drag conveyor
Optional skid steer drive in cleanout tray
Optional side gutter flip tray for removal of floating debris

Undercarriage/Wheel Wash

Optional Automatic Undercarriage Wash System (AUWS). Inground system to mate with Hydropad lane platform for vehicle side and undercarriage decontamination



REMOTE EQUIPMENT MODULES

A Remote Equipment Module (REM) provides operators with controls, accessories and tools to optimize convenience, safety and performance. REM frame features heavy duty I-Beam construction that has structurally secure attachment to Hydropad platform. Attachments to frame can include; mounting plates, brackets, booms, hose reels, control panels, and perhaps more to best compliment application. REM mounting is engineered for superior strength, positioned for efficiency and minimize platform area intrusion to 6" (152 mm). All items of REM are organized and/or safely stored.

An REM can be equipped with:

- Hydroblaster Wash/Rinse Controls
- Hydroblaster Water Cannon Controls
- Hydrofoamer Foaming System Controls
- Vacuum controls
- 1 or 2 Manual or Spring Retractable Hose Reels
- 1, 2, or 3 Overhead Booms (180°)
- Miscellaneous - Wand, Trigger Gun, Brushes, Etc.



HYDROPAD WALLS

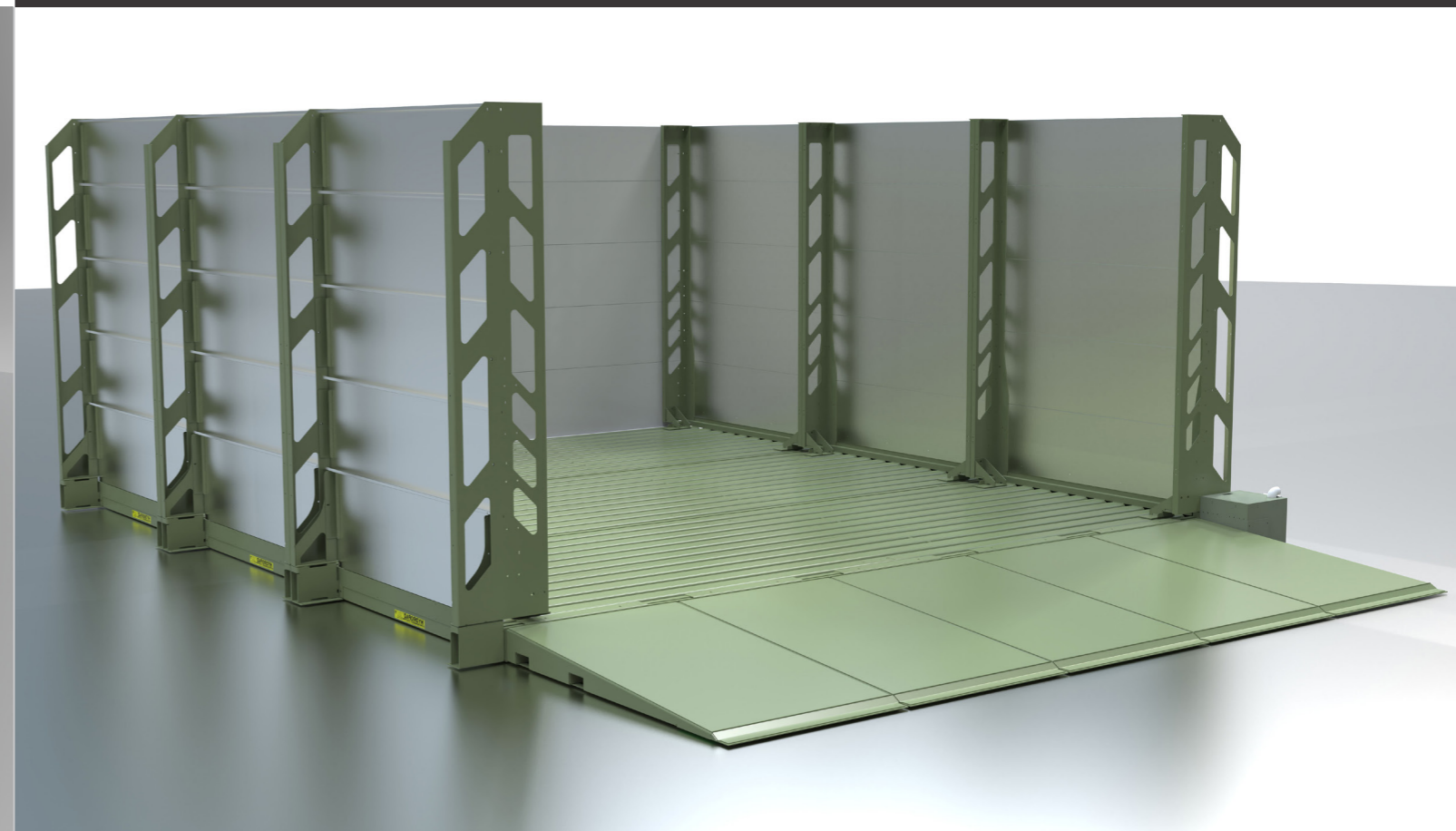
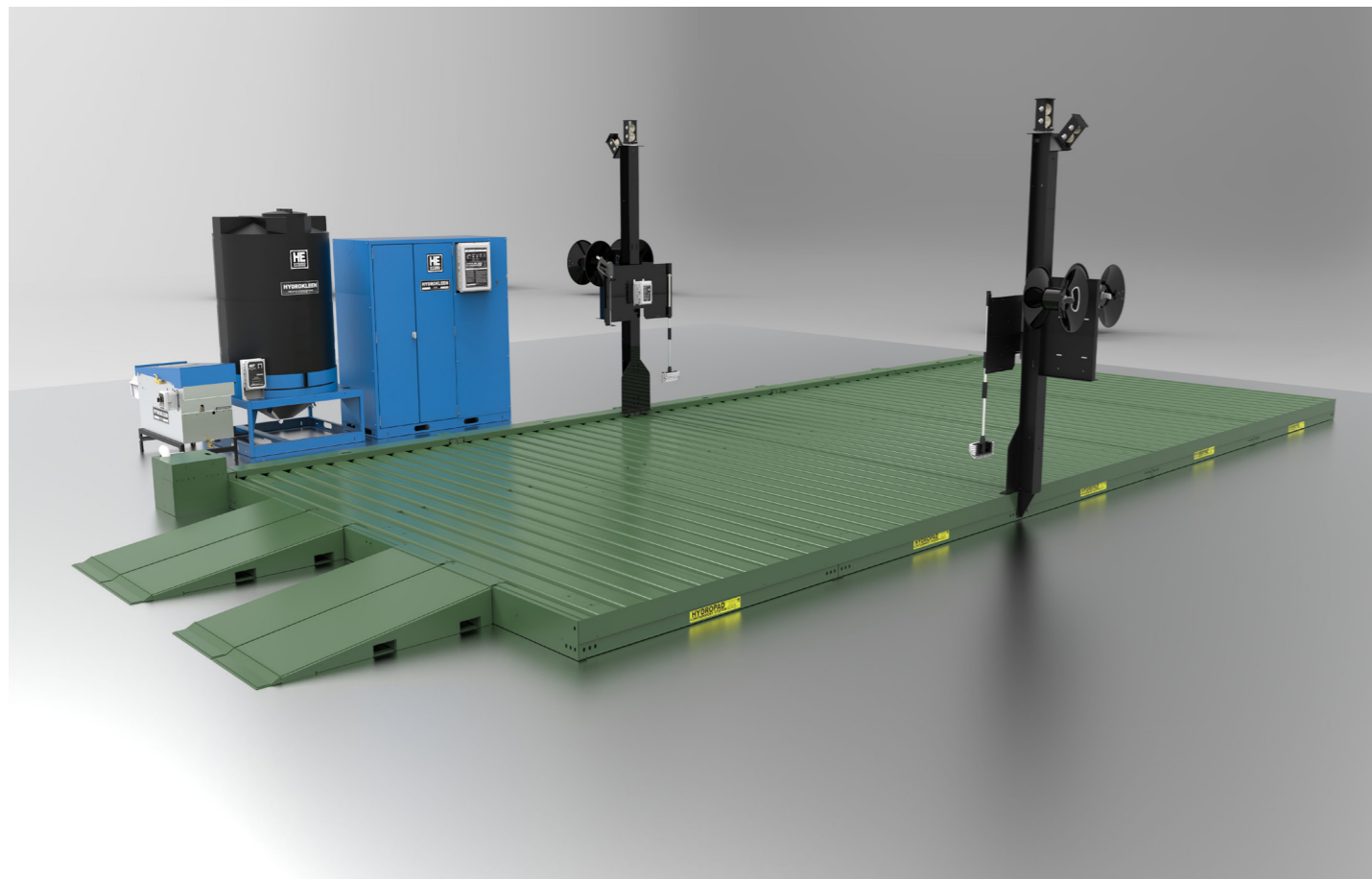


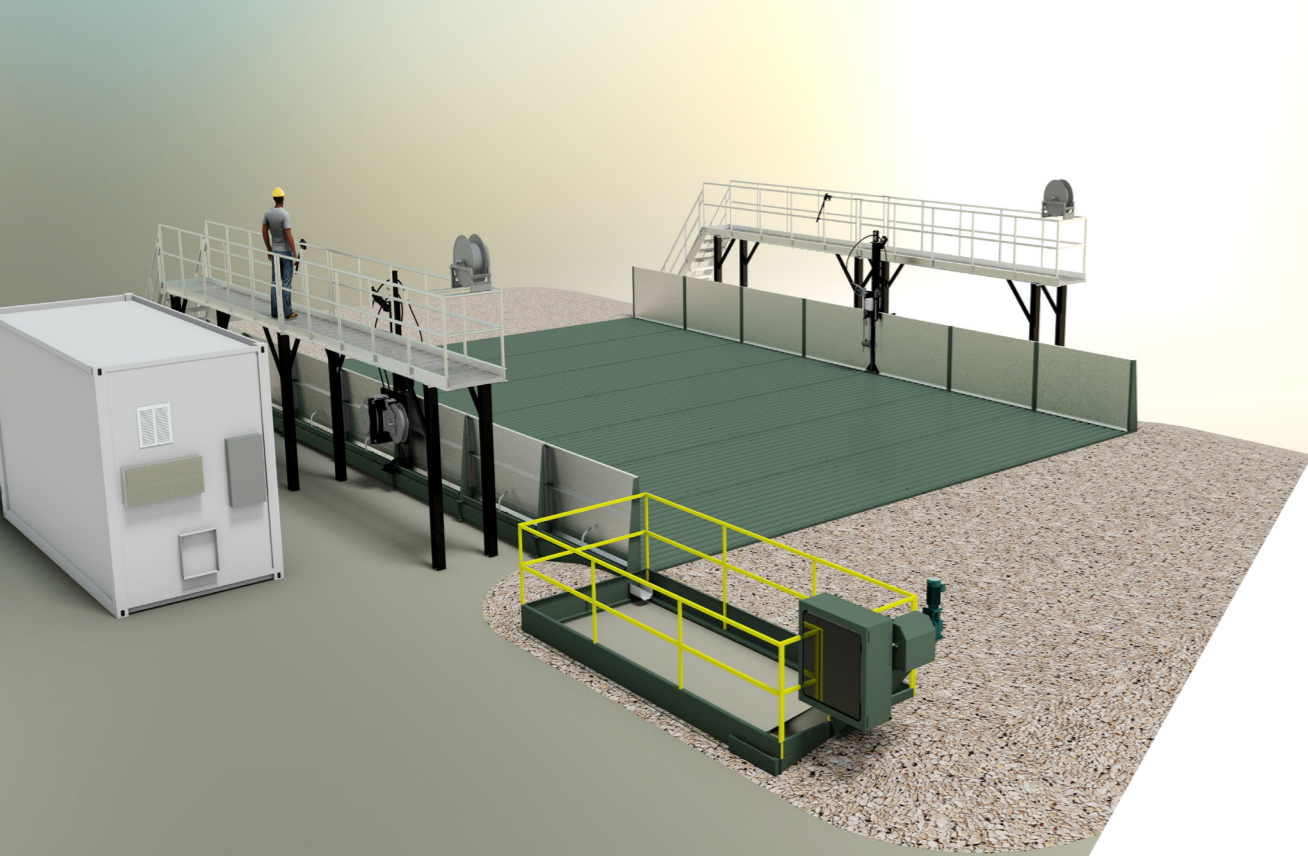
Standard

Walls may be required for containment of wash water spray. Hydropad is excellent for collection and containment of wastewater and debris during active wash/rinse operation. Walls can be used to contain overspray and improve efficiency of containment to benefit water conservation.

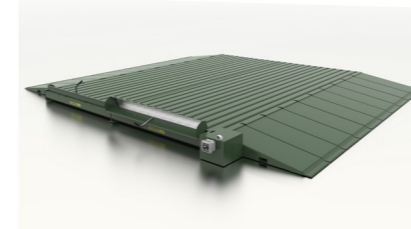
High Wind Rated

Hydropad system 20' (6.01 M) wide by 30' (9.1 M) long could include outdoor rated walls, 14' (4.3 M) high, with a wind rating of over 100 MPH (161 KM/H). Structural engineering perfection, manufacturing superiority.



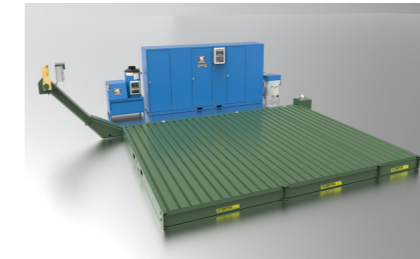


SIDE GUTTER ATTACHMENTS SOLIDS/LIQUID SEPARATION BENEFITS



FLIP GUTTERS

Simple "Flip Screen" mechanism designed to capture floating debris. When screen loaded, simple rotations of mechanism handle will deposit dewatered debris adjacent



DRAG CONVEYORS

Optional Hydropad side gutter drag conveyor is an automatic or manual solids removal system. Conveyor transfers solids to end of side gutter while wastewater is pumped out at other end for filtration. Solids conveyor at side gutter end employs vertical transition for above ground dewatered solids into discharge



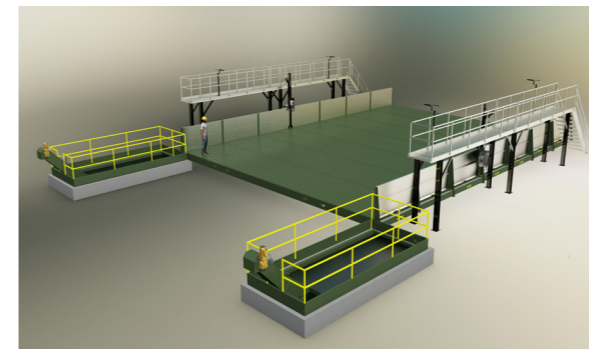
DRIVE-IN CLEAN-OUT TRAYS

Skid steer drive in clean out tray option receives wastewater from Hydropad side gutter. Clean out tray stores wastewater volume allowing reasonable retention time for solids

OPTIONS TO OPTIMIZE WASH/RINSE APPLICATIONS

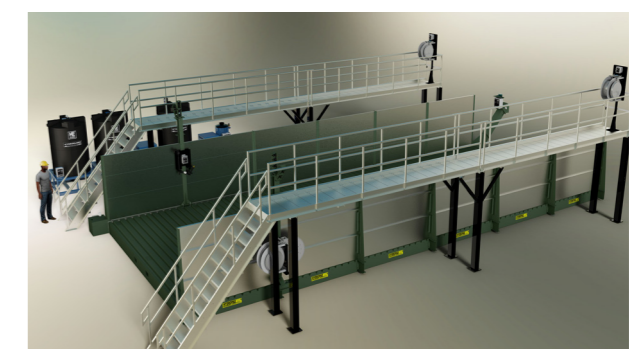


- Remote Equipment Modules (REM)
- Hydropad walls, Standard or High Wind Rated
- Side Gutter Attachments – Benefit For Solids/Liquid Separation
 - Drag Conveyor
 - Skid Steer Drive In Clean Out
 - In-ground Wastewater Storage W/ Drag Conveyor
- Hydropad System Catwalks



IN GROUND CONVEYORIZED SOLIDS LIQUID SEPARATION

In-ground storage vessels can be sized with sufficient retention to benefit solids/liquid separation of wastewater. Solids are precipitated to bottom of incline tank and automatically removed via drag conveyor.



CATWALKS

Elevated catwalks for Hydropad system are available in lengths of 10' (3.05 M), 15' (4.57 M), 20' (6.1 M). Catwalk option also has a variety of wash station features that provide remote control of wash equipment and array of wash tools including high volume water cannons for de-muck applications.

 **HYDRO ENGINEERING INC**

865 W 2600 S
Salt Lake City, UT
USA, 84119

Phone: 801-972-1181

E-mail: help@hydroblaster.com
www.hydroblaster.com

THANK YOU
for your business